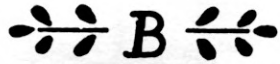
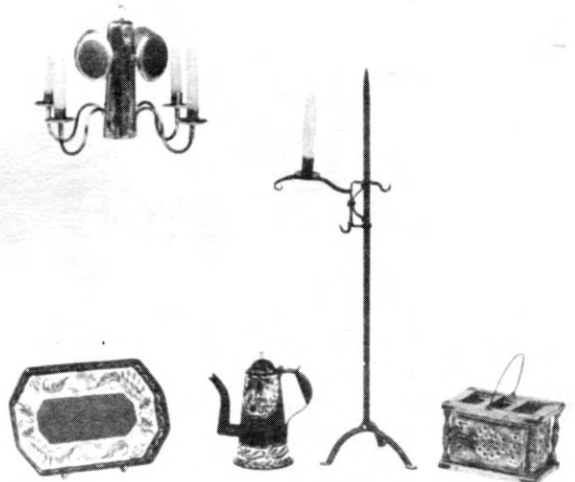


STUDIO

 MINIATURES

Tinware (even in miniature) is as much valued today as it was in your great grandmother's day. Studio B now has over 55 accessories to enrich your miniature collection. Each is a hand crafted reproduction of a popular piece used between the 1700's and early 1900's.

We are particularly proud of our most difficult pieces, the Curved Spout Coffee Pot, Foot Warmer and Deed Box. Not shown in the pictures are the fine details such as crimped cups and rolled edges on chandeliers and tiny working hinges and latches.



The lighted devices come with hand crafted wax candles, white in black items, beeswax in antiqued ones. Items notated with an "E" are electrified with 12 volt bulbs compatible with all popular doll house wiring. Please write for more details.

Patterns used on all painted ware are authentic. Except on those items where red may be specified, all decorations are done on a black background. Matching tea and coffee services (items 2-5, 18) are available on request.

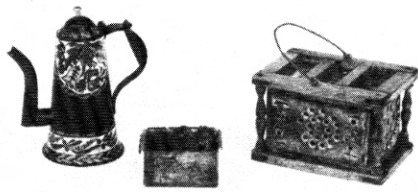
If you don't see something you want, please write and ask about it. All work is scaled 1 inch: foot and is fully guaranteed.

In addition to the tinware, Studio B also offers a fine line of Early American furniture and primitive paintings. For more information send S.A.S.E. and 35¢ to:
 Mrs. Robert Birkemeier, Manlius, N.Y. 13104.

Bill and Peggy Birkemeier



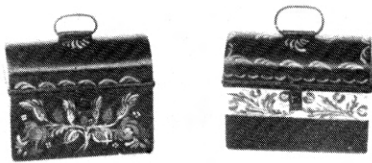
The Tinsmith's Shop - note the electrified chandelier in the office.



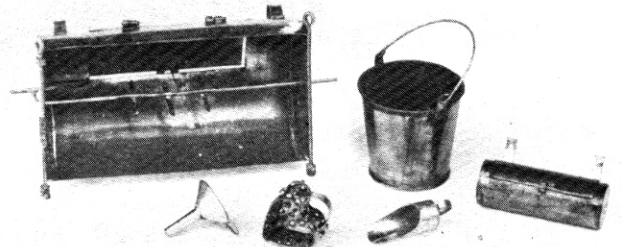
- 3b. Curved spout - fancy
- 1. Foot Warmer



- 2. Creamer
- 3a. Curved Spout
- 4. Sugar Bowl
- 5. Large Coffin Tray



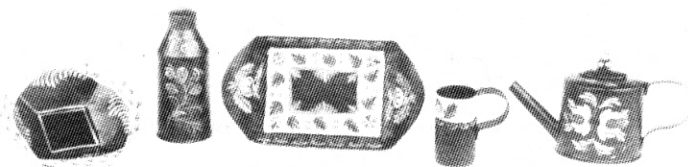
- 6. Deed Box
 - a) central design
 - b) white band

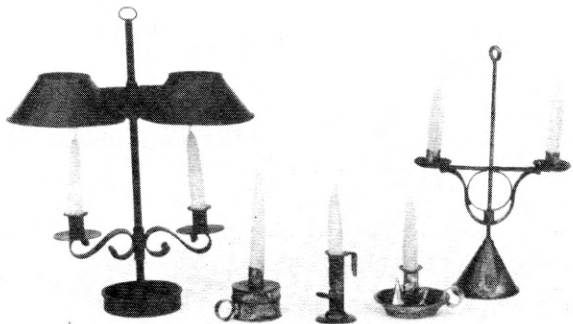


- 7. Square Lantern
- 8. Wall Mount

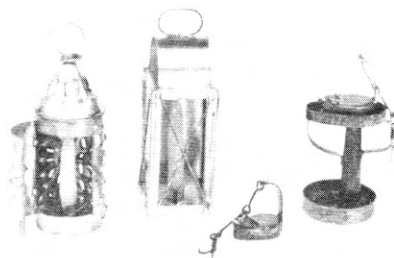
- 9. Tin Kitchen
- 10. Funnel
- 11. Cheese Mold
- 12. Milk Pail
- 13. Scoop
- 14. Candlebox

- 15. Apple Tray
- 16. Tea Caddy
- 17. Bread Tray
- 18. Mug
- 19. Tea Pot

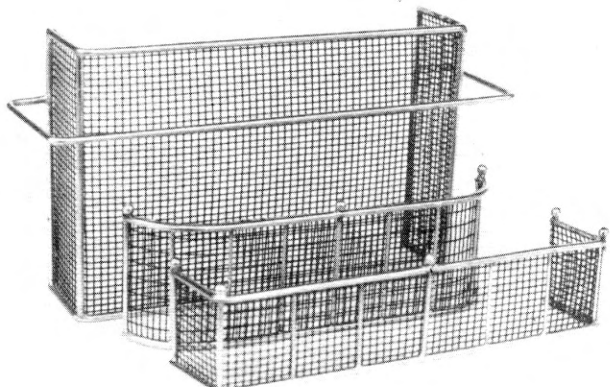




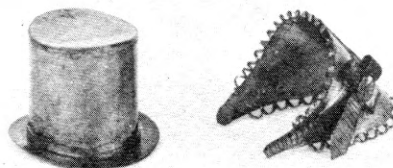
- 20. Student Lamp
- 21. Tinderbox Candle
- 22. Hogscraper Candle
- 23. Chamberstick Candle
- 24. Sandbottom Candle



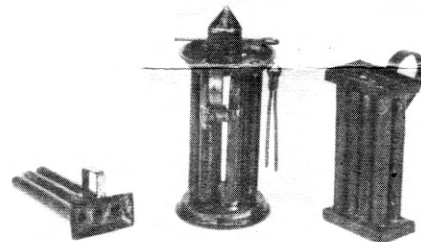
- 25. Punched Lantern
- 26. Slideback Lantern
- 27. Betty Lamp
- 28. Betty Lamp on Stand



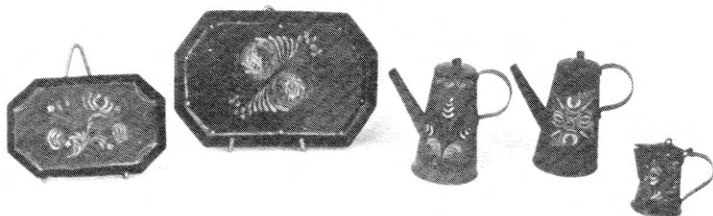
- 29. Fireplace Screens
 - a) Drying Bar
 - b) Curved
 - c) Square



- 30. Tin Top Hat and Bonnet

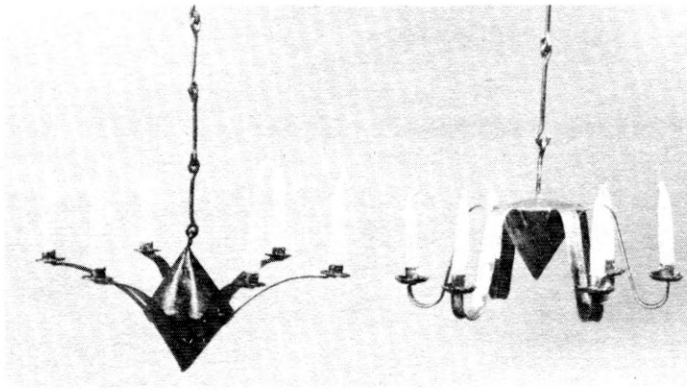


- 35. Candlemold - 3 pt.
- 36. Circular Candlemold
- 37. Candlemold

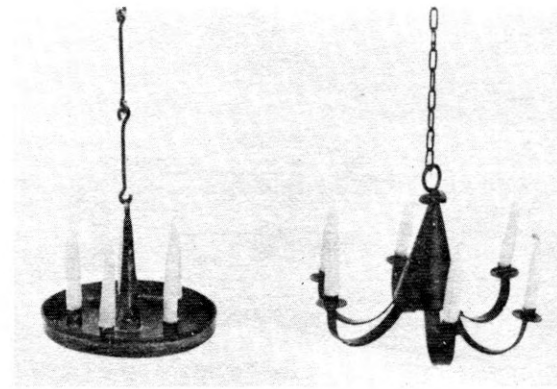


- 31. Small Coffin Tray
- 32. Large Coffin Tray
- 33a. Coffee Pot on red
- 33b. Coffee Pot
- 34. Syrup Jug

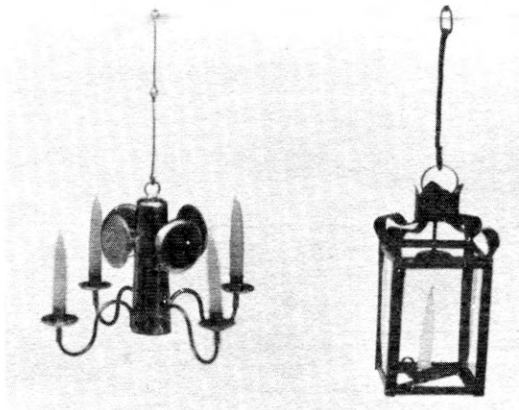
photos: by Bill Seelig



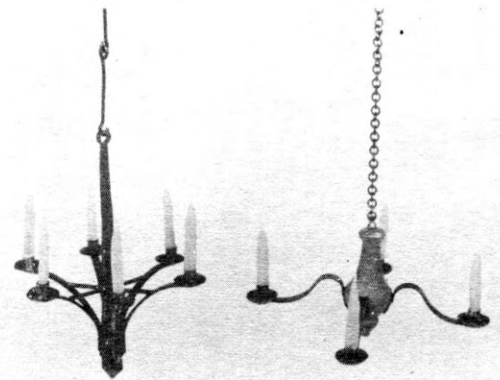
38. Williamsburg Chandelier
39. Raleigh Chandelier



40. Sturbridge Chandelier
41. Colonial Chandelier



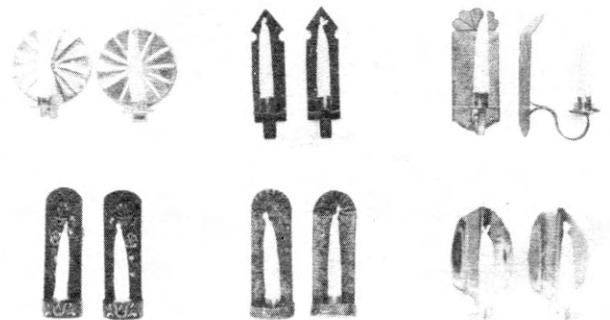
42. Ship Chandelier
43. Landis Lamp



44. New England Chandelier
45. Spindle Chandelier



46. Candlestand



47. Sconces
Top - a. Pie, b. Strap, c. Long Arm
Bottom - d. Tole, e. Crimped, f. Oval

PAGE TWO

- 1 Footwarmer, wood frame highlights punched design. Complete with glowing embers, \$33
- 2 Creamer, colorful tulip design on white, \$6*, ant. \$4.50
- 3 Curved Spout, hinged dome, lid, brass nob. Graceful design.
 - a) Painted as shown, \$22*
 - b) Fancy-intricate pattern both sides, \$26
- 4 Sugar Bowl, removable lid, white band, \$8*, ant. \$6
- 5 Large Coffin Tray, white band tulip pattern, \$10*
- 6 Deed Box, very detailed, perfect for all your documents
 - a) central design on black, \$22
 - b) white band, \$22*
- 7 Square Lantern, four rings encircle this beautiful piece, \$20, E - \$25
- 8 Wall Mount, for any lantern, \$1
- 9 Tin Kitchen, a new design not shown, more detail, your initials on door. ant. \$35
- 10 Funnel, 1/2" long, Ant., \$2.00
- 11 Cheese Mold, heart shape, punched, \$6.00
- 12 Milk Pail, just like your grandmothers. Ant., \$5
- 13 Scoop, early design, Ant., \$2.00, painted, \$3.25
- 14 Candlebox, w/3 candles, ant., \$10
- 15 Apple Tray, fruit pattern on Connecticut style white band, \$8*
- 16 Tea Caddy, delicate fruit pattern on black, \$10, ant. \$8
- 17 Bread Tray, white band with yellow accents, \$9*
- 18 Mug, white banded tulip pattern, \$3.00*
- 19 Tea Pot, oval shape, removable lid, floral on black or white circle design, \$15*, ant. \$11

PAGE THREE

- 20 Student Lamp, very detailed, perfect for a table. Ant. or black, \$19 E-\$29
- 21 Tinderbox Candle, a unique piece complete with tiny flint, steel and tinder, \$8.00
- 22 Hogscraper Candle, can hang by hook or stand on table, with slider, \$6.50, E -\$11.50
- 23 Chamberstick Candle complete with snuffer, \$9, E - \$14
- 24 Sandbottom Candle, an early design, adjustable height, and weighted base, \$15
- 25 Punched Lantern, door opens to reveal candle, ant. \$22 1 3/8"H, E - \$27
- 26 Slideback Lantern, tiny cross wires, sliding "mirror" back. Ant., \$17, E - \$22
- 27 Ipswich Betty Lamp, detail down to the wick! \$7.25
- 28 Betty Lamp With Stand, for table or mantel. Ant., \$15
- 29 Fireplace Screens, brass with black screens;
 - a) Dry bar, 2 1/2"H, \$16
 - b) Curved, 1"H, \$16, \$20
 - c) Square, 1"H, or low, 3/4"H, \$16 \$20
 Made to your specifications Higher price is for more accurate screening as shown on curved screen
- 30 Tin Hat and Bonnet, for those tin anniversary gifts Set, \$22
- 31 Small Coffin Tray, central floral on black or white band, \$8 1"long
- 32 Large Coffin Tray, central fruit or floral on black, \$10 1 1/2" long, ant. \$8
- 33 Coffee Pot, floral patterns, removable top, red or black, \$12 ant. \$10
- 34 Syrup Jug, tiny hinged lid, floral pattern on both sides, \$11
- 35 Candlemold - 3 tube with handle, ant., \$8.00
- 36 Circular Candlemold, 6 candles, 3 tiny skewers, very detailed, ant., \$22
- 37 Candlemold, 8 candles, Ant., \$19

PAGE FOUR

- 38 Williamsburg Chandelier, black or ant. finish, 2 1/8" wide. \$27
 - 39 Raleigh Chandelier, black or ant. finish, \$27, E - (5 arm) \$52
 - 40 Sturbridge Chandelier, very early design, ant., 5 candles, \$13
 - 41 Colonial Chandelier, black or ant., 1 3/4"W, \$27 E - 5 arm, \$52
 - 42 Ship Chandelier, used on an old whaling vessel, shiny, \$30
 - 43 Landis Lantern, large, hanging lantern ant., \$21, E - \$26
 - 44 New England Chandelier, ant., 2 1/2"H, rolled edges, crimped cups, \$30
 - 45 Spindle Chandelier, 4 curved arms, crimped cups, mustard color wooden spindle, \$22
 - 46 Candlestand, wrought iron finish, adjustable candle arm, (a beautiful piece), 3 3/4"H, \$20, E - \$25
 - 47 Sconces:
 - a) Pie - shiny finish, \$5 pr, E - \$15
 - b) Strap - black, \$5 pr, E - \$15
 - c) Long Arm - a unique piece ant., \$8.00 pr, E - \$18
 - d) Tole - tiny birds and flowers adorn these sconces, \$8 pr, E - \$18
 - e) Crimped - ant., \$7.00 pr, E - \$17.00
 - f) Oval - crimped cups, polished, \$7.00 pr, E - \$17.00
- TOO SMALL TO PHOTOGRAPH
- 48 Doughnut cutter, ant., \$1.50
 - 49 Cookie cutters, in many designs: star, animals, gingerbread people, etc. ant., 3/pkg., \$6.00
 - 50 Candles, 4/pkg., white or beeswax, 1" long, \$1.50
- * black background standard, red is optional

E - electrified

STUDIO *B* TINWARE

These coming months of 1979-1980 are going to be unusually busy ones for us. Bill is being transferred to the Outer Banks of North Carolina and we will be moving in May. Since the move means having to plan and build a new house, we anticipate having less free time for miniatures. This unfortunately means it will take us a little longer to fill your order, hopefully in 12 to 18 months. Your patience is appreciated. Some pieces too new to be included in our brochure are listed below. We're especially pleased with our new line of polished brass pieces. Write for further details.

- 51. Money Box - perfect for any period shop, coins included. \$18
- 52. Trunk - ample storage space for miniature treasures, 1-3/4" X 1" X 1" ant. \$18
- 53. Ember Carrier - pierced lid, turned handle, lid opens, 1700's, \$12
- 54. For your Victorian home - decorated water carrier and slop pail, very detailed, 1850-1870, \$55/set

ITEMS 55 TO 66 ARE AUTHENTIC COPIES OF SHAKER PIECES - all antique finish.
Ref: "Shop Drawings of Shaker Iron and Tinware," by Ejner Handberg.

- 55. Shaker Chandelier - six arm, rolled edges and crimped cups, copy of original in Cooperstown, \$25
- 56. Candlestick - wrought iron hogscraper, \$6
- 57. Candle Sconce - held hogscraper and matches, \$5.50
- 58. Ladle - simple and large for those big servings, \$3
- 59. Tin Strainer - with very tiny holes, \$4
- 60. Tin Cups - indispensable, short or tall, \$2
- 61. Dipper - every detail down to the hanging loop, \$5
- 62. Lamp Filler - for oil lamps, removable lid, \$9
- 63. Graded Measures - three sizes, \$10/set
- 64. Shaving Mug - unusual piece, \$3
- 65. Shaker Stove - wrought iron with two working doors and latch, \$65
- 66. Watering Can - perfect for the kitchen or garden, \$13

NEW, VERY DETAILED BRASS MINIATURES

- 67. Brass Acorn Lamp - removable twin wick cone, 1850's, \$18
- 68. Brass Candlestick - Classic design (Dutch or Spanish, 1500's), \$12
- 69. Brass Inkstand - two candles, bell, shaker and ink well on a footed brass tray, removable lids. A classic piece for any fine home. 1700's, \$65
- 70. Brass Inkwell - simple inkwell with a tiny quill, \$6
- 71. Fireplace Tools - working tongs, shovel, and stand. Wrought iron with distinctive cannonball finials. First piece of a set which will include matching andirons and a hand wired fender, \$90

September, 1979

STUDIO
B
 MINIATURES

Dear Friends,

We have been gradually adding new items to our collection of Early American tinware and brass reproductions, We are pleased to show here our new additions.

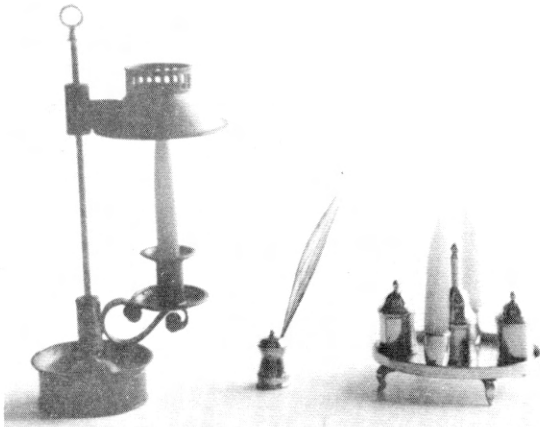
The Cannonball fireplace set was designed for the 1980 IGMA Auction. The finial design on tools and screen can be the cannonball, as shown, "lemon," or urn. The screen is made to your specification.

We are slowly and steadily working on our long list of backorders. The demands of caring for our family of two young girls and Bill's fulltime job leave us precious few hours to work on our miniatures. With the youngest one now two, we have been able to make encouraging progress and hope this will continue. We thank you for your patience and look forward to answering your requests sooner.

Sincerely,

Peggy

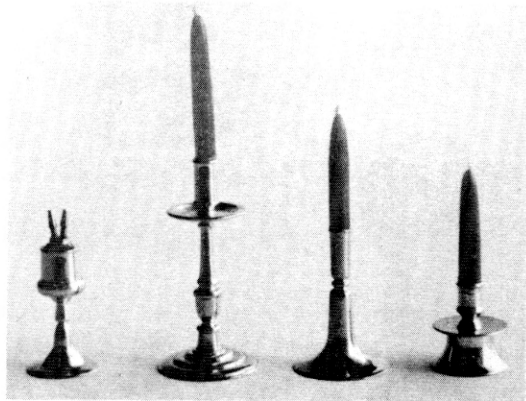
June, 1983



55

71

70



68

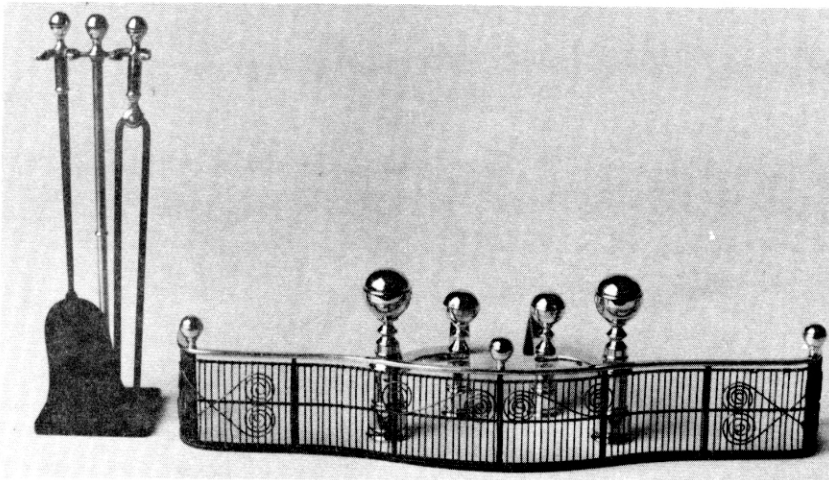
77

76

69



81



72

79

80

- 51. Money Box - perfect for any period shop, coins included. \$18
- 52. Trunk - ample storage space for mini treasures, 1 3/4" x 1" x 1", ant. \$20
- 53. Ember carrier - pierced lid, turned handle, lid opens, 1700's. \$14
- 54. Water Carrier and Slop Pail, decorated, detailed finishing, 1850-1870. \$70/set.
- 55. Ridinger lamp - a detailed, one arm student lamp, black or green. \$30

SHAKER PIECES, antique finish

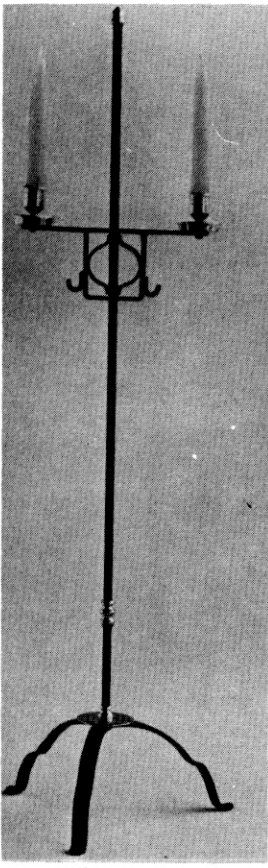
- 56. Shaker Chandelier - copy of original in Cooperstown, six arm. \$25
- 57. Candlestick - wrought iron hogscraper, \$6.
- 58. Sconce - held hogscraper and matches. \$6.50
- 59. Ladle - simple and large for those big servings. \$4
- 60. Tin Strainer - with tiny holes. \$5
- 61. Tin cups - indispensable, short or tall, \$2

- 62. Dipper - every detail down to the hanging loop. \$6
- 63. Lamp Filler - for oil lamps, removable lid, \$9
- 64. Graded Measures - three sizes, \$12/set
- 65. Shaving Mug - unusual piece, \$3
- 66. Shaker Stove - wrought iron with two working doors and latch, and pipe to fit your room. \$75
- 67. Watering can - perfect for the kitchen or garden. \$13

OUR BRASS COLLECTION

- 68. Acorn lamp - removable twin wick cone, 1850's. \$18
- 69. Capstan candlestick - early classic design, for any period room. \$12
- 70. Inkstand - two candles, bell with clapper, shaker and ink well on a footed brass tray, removable lids, 1700's. \$70
- 71. Inkwell - simple shape with a tiny quill. \$6

- 72. 3pc. Fireplace Tools - shovel, working tongs and stand. Wrought iron with distinctive brass cannonball finials. \$90
- 73. 2pc. Fireplace tools - shovel and tongs with "lemon" shaped brass finials. (or urn) \$60
- 74. Knifeblade Andirons - Wrought iron with turned brass finials, lemon, urn or cannonball. \$50
- 75. Jamb Hooks - brass, mounted on either side of fireplace to hold a tool. \$15/pr.
- 76. Trumpet candle - a Williamsburg reproduction. \$12
- 77. "Williamsburg" candle - taller and more intricate in design, \$16
- 78. Two Arm Candlestand - brass and wrought iron, c.mid 1700's. \$55
- 79. Cannonball Andirons - 1 1/16" H, c.mid 1800's, Boston. \$80
- 80. Fender - low, hand wired, choose urn, lemon or cannonball finial \$80
- 81. Dome base candle - 5/8" H, \$15



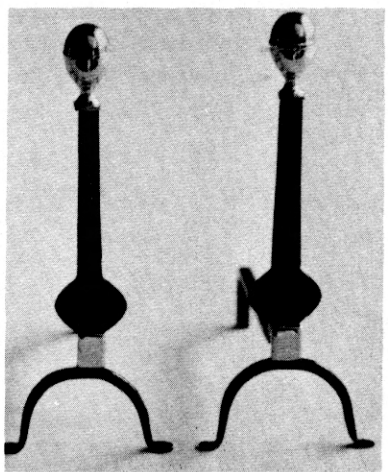
78



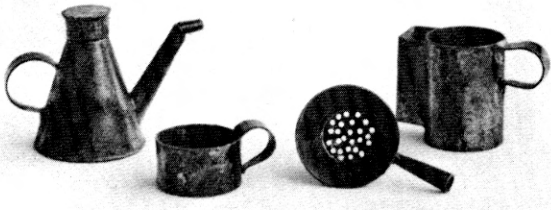
58



54



74



63

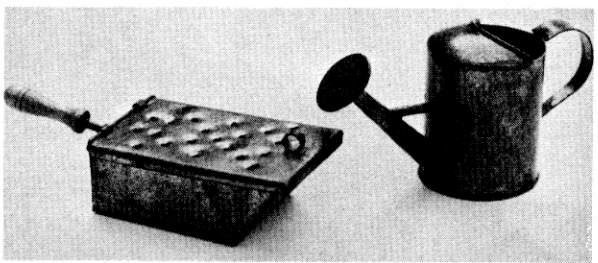
61

60

65

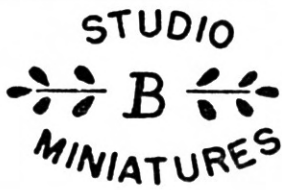


51



53

67



KITTY HAWK, N.C. 27949

SHIP TO: _____ PHONE _____
 NAME: _____
 STREET: _____
 CITY _____ STATE _____ ZIP _____

CAT. NO.	ITEM	FINISH	PRICE	QUANTITY	TOTAL

All work is guaranteed against rust and breakage.

Chandelier chains are 4" long unless otherwise specified.

Where needed please indicate desired finish - black/antique/shiny/red.

Allow 12-16 months for delivery. Items are shipped UPS or First Class. If you are not completely satisfied return within 10 days, wrap well and insure.

Send no check. A deposit may be requested when we begin work on your order.

Naturally, these prices are subject to change without notice. This price list supercedes all others.

TOTAL OF ORDER	
N.C. RESIDENTS ADD 4% SALES TAX	
SHIPPING AND HANDLING	\$ 2.00
TOTAL AMOUNT DUE WHEN BILLED	
DATE ORDERED	/ /