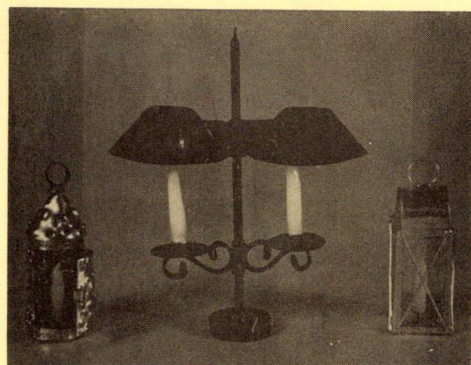


**STUDIO  
B  
MINIATURES**

THE BIRKEMEIERS  
Norwell, Mass. 02061  
Phone: 617-659-7361



1. BRACED BACK WINDSOR  
\$20.00



- 2. PUNCHED LANTERN - \$12.00
- 3. TWO CANDLE LAMP - \$10.50
- 4. SLIDE BACK LANTERN - \$12.00



5. "GIRL IN GREEN" - \$8.00

TO: THOSE WHO DELIGHT IN TINY THINGS

If you are a collector or a decorator of a doll's house you may be interested in our selection of furniture, tin accessories and paintings.

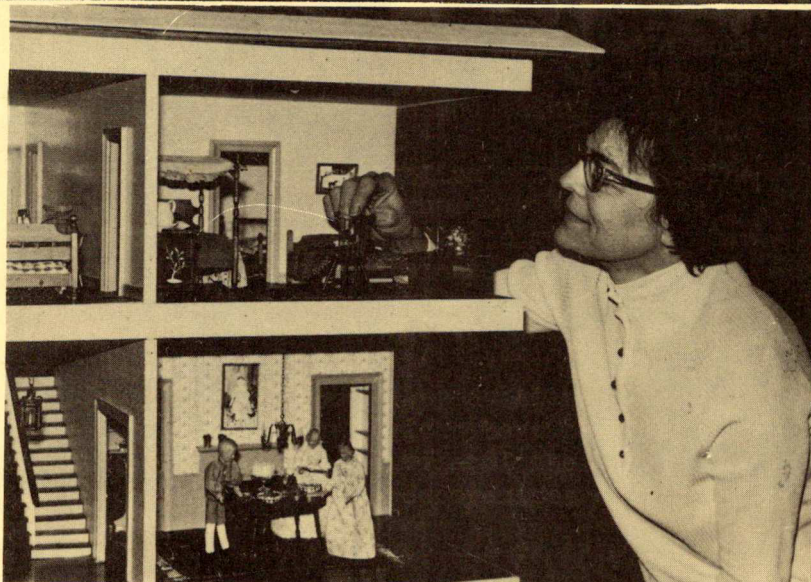
Our Windsor chairs have delicate turnings. The comb-back is a copy of a museum piece and is large enough for a tired doll to relax in. Our miniature rocker is hand stenciled. All our furniture is made from hard woods carefully finished.

The tin accessories are reproductions of old pieces. All lighting devices have hand dipped candles, courtesy of the wife of the tinsmith. She also does the lovely decorations on the tinware.

Our paintings are reproductions of early American folk art. They are done in acrylic paint on board, extremely detailed and add charm to a miniature setting. Each is suitably framed and has a length of wire for hanging.

All pieces are made by members of my family who have been making and enjoying miniatures for many years. Now we offer a variety for sale. The scale is one inch to the foot and all work is guaranteed. We hope that you will find something here to tickle your fancy.

Millie Birkemeier - Proprietor  
Peggy - Painter and Candlesmaker  
Wendy - Limner  
Bill - Tinsmith  
Bob - Chief Carpenter



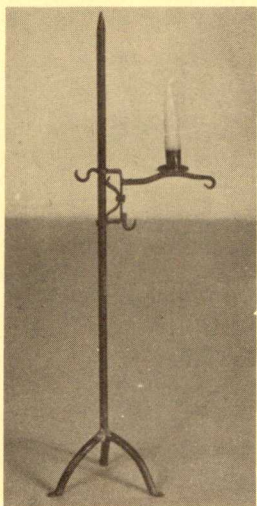
# EXQUISITE REPRODU



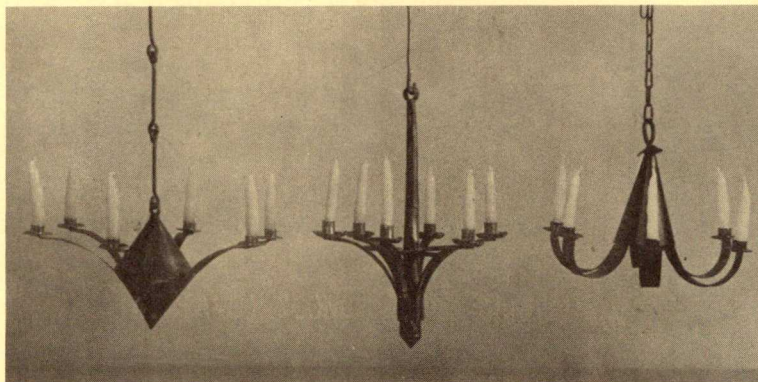
6. "THE PLANTATION" - \$12.00



7. GUILFORD CHEST - \$25.00



8. CANDLE STAND  
\$10.50



### CHANDELIERS

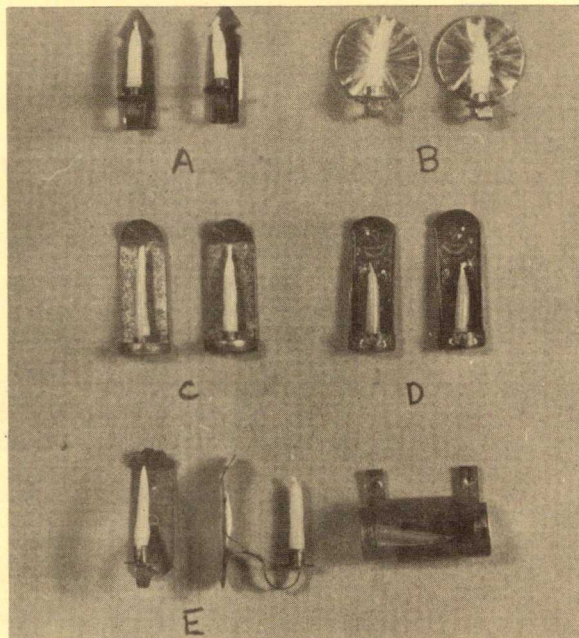
9. WILLIAMSBURG - \$15.00 10. NEW ENGLAND - \$20.00  
11. COLONIAL - \$15.00



12. LOW BACK WINDSOR/  
ARM CHAIR - \$20.00



13. "GIRL IN RED"  
\$8.00



14. (A-E) SCENCE 15. CANDLEBOX - \$7.50

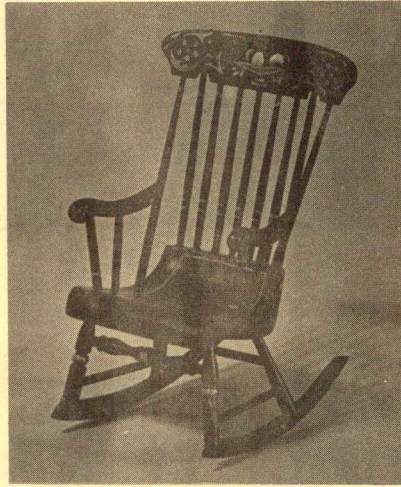


16. "BABY IN RED CHAIR"  
\$8.00

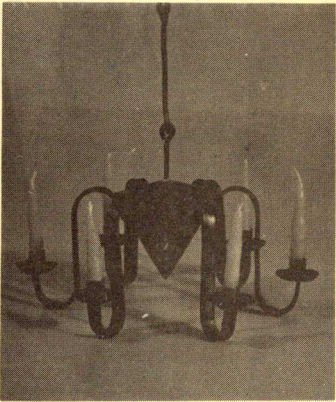
# CTIONS IN MINIATURE



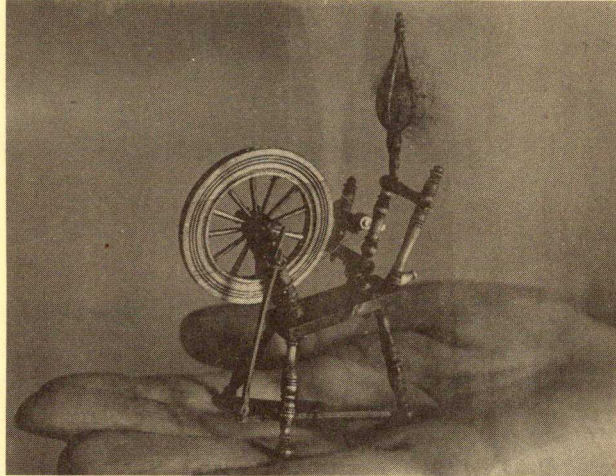
17. COMB-BACK WINDSOR  
\$25.00



18. BOSTON ROCKER  
\$25.00



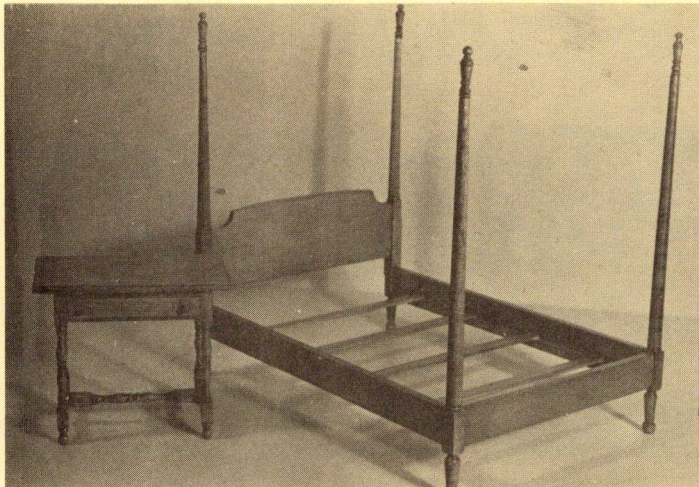
19. RALEIGH CHANDELIER  
\$20.00



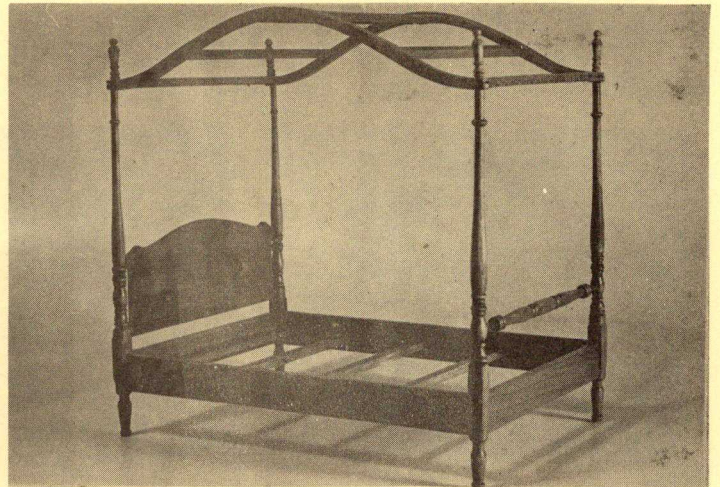
20. FLAX SPINNING WHEEL - \$50.00



21. "MARY JANE SMITH"  
\$8.00



22. TAVERN TABLE - \$30.00  
23. FOUR POSTER BED - \$15.00



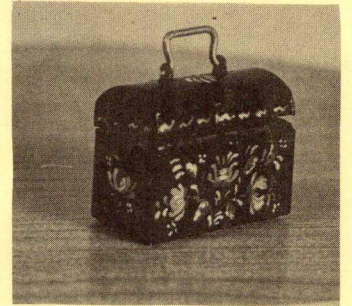
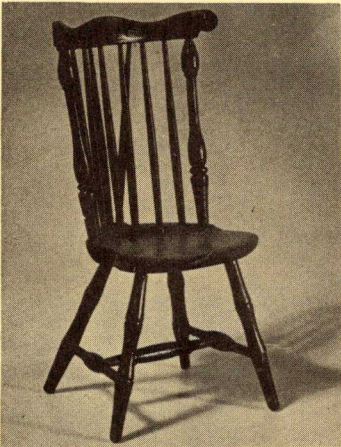
24. CANOPY BED - \$35.00



25. WINDSOR SIDE CHAIR - \$12.00  
 26. ROUND TABLE - \$20.00

27. "PICKING FLOWERS"  
 \$12.00

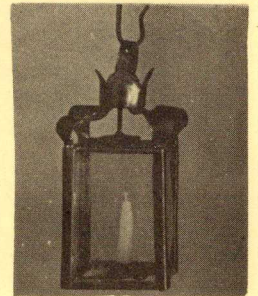
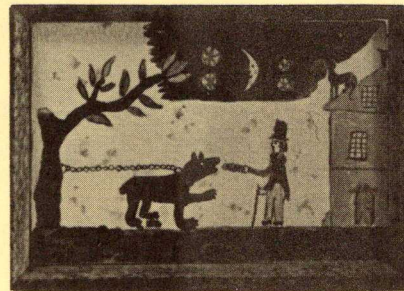
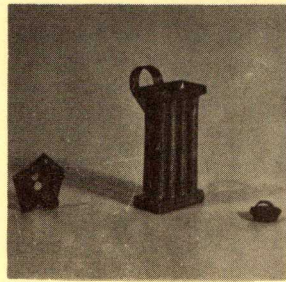
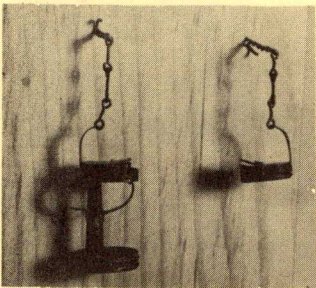
28. CHEESE MOLD - \$ 3.00  
 29. FUNNEL - \$ 2.00  
 30. COFFEE POT - \$ 13.00  
 31. CANDLESTICK - \$ 7.50



32. WINDSOR CHAIR - \$20.00

33. GATE LEG TABLE - \$60.00

34. DEED BOX - \$15.00

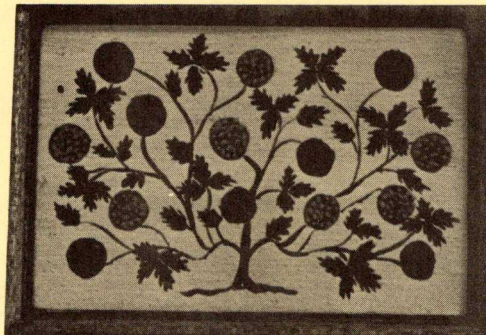
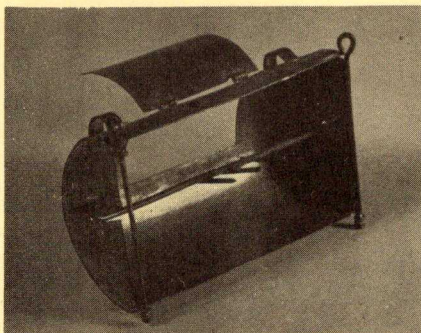


35. BETTY LAMP W/STAND  
 \$10.50  
 36. BETTY LAMP \$5.25

37. COOKIE CUTTER \$3.75  
 38. CANDLEMOLD \$9.00  
 39. DOUGHNUT CUTTER \$1.25

40. "MAN FEEDING A BEAR  
 AN EAR OF CORN"  
 \$6.00

41. LANDIS LANTERN  
 \$15.00



42. TIN KITCHEN - \$15.00

43. "TREE OF LIFE" - \$6.00

44. "TEA" CADDY- \$6.00  
 45. SUGAR BOWL - \$5.00  
 46. CREAMER - \$3.50  
 47. COFFEE POT - \$9.00

## PAGE ONE

- 1 Braced fan-back Windsor chair. Light finish, 3½" high, \$20.
- 2 Punched lantern, holes in cone and door that opens on tiny hinge to reveal candle. Shiny tin finish, 1 3/8" high, \$12.
- 3 Two candle lamp, beautiful piece, perfect for table or desk. Antique or black finish 2½" high, \$10.50
- 4 Slide back lantern has tiny crosswires and removable "mirror" back. Shiny tin or antique finish. 1 3/8" high, \$12.
- 5 "Girl in Green", John Brewster, Jr. c1800. Gray background, 3 x 2 1/8", \$8.

## PAGE TWO

- 6 "The Plantation", artist unknown, c1825. Extremely detailed with water wheel, man fishing, willow tree and fully rigged ship. 2 5/8 x 3 1/4", \$12.
- 7 Guilford Chest. A copy of an early blanket chest, made in Guilford, Connecticut. 3 7/8" long, 1 3/4" high and 1 5/8" deep, \$25.
- 8 Candle stand, adjustable, 3 3/4" high, c1751, \$10.50
- 9 Williamsburg chandelier, black or antique finish. 2 1/8" wide. Plain, as pictured \$15. With crimped cups and rolled edges, \$20.
- 10 "New England" chandelier, antique finish only. 2½" high with rolled edges and crimped cups as pictured, \$20.
- 11 Colonial chandelier, antique or black finish. 1 3/4" wide. Plain, as pictured, \$15. With rolled edges and crimped cups, \$20.
- 12 Low-back Windsor arm chair. Dark finish, 2½" high, \$20.
- 13 "Girl in Red with Her Cat and Dog", Ammi Phillips c1834-1836. Dark brown background, 3 x 2 5/8", \$8.
- 14 Sconce A-black, 7/8" long, \$3. a pair.  
B-shiny finish, 5/8" across \$3. a pair.  
C-antique finish, crimped top, 1" long, \$4.50 a pair.  
D-tiny birds and flowers adorn these black sconces, 1" long. Bayberry candles, \$5. a pair.  
E-antique finish, 1" long, \$4.50 a pair.

- 15 Candlebox with 3 candles. 7/8" long, antique finish, \$7.50
- 16 "Baby in Red Chair", artist unknown, 1800-1825. Blissfully sleeping baby dressed in pale yellow green. 2½ x 1 3/4", \$8.

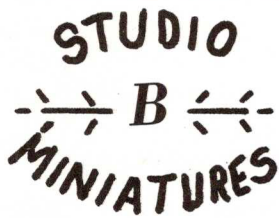
## PAGE THREE

- 17 Comb-back Windsor chair with wide seat. Legs pierce seat. Dark finish, 3 3/4" high, \$25.
- 18 Boston rocker with rosewood grained finish, 3 5/8" high, \$25.
- 19 Raleigh chandelier, black or antique finish. Pictured with rolled edges and crimped cups, \$20. Without these features for \$15.
- 20 Small spinning wheel for flax or fine wool, Very fine, intricate turnings highlight this wheel. Moving parts. \$50.
- 21 "Mary Jane Smith" Joseph Whiting Stock, 1838. Little girl in pink, green background and red drape 3 x 2 1/8", \$8.
- 22 Tavern table with authentic vase-and-ball turnings and drawer. Light finish, 3 1/8 x 2 x 2 5/8", \$30.
- 23 Four poster bed, light finish, 6 3/4 x 4 7/8 x 6", \$15.
- 24 Canopy bed in walnut, cherry or maple, state preference. 6 3/4 x 4 7/8 x 7" at highest point. Extremely fine and delicate, \$35.

## PAGE FOUR

- 25 Fan back Windsor chair, choice of color; colonial red, mustard, green or black. About 3 3/8" high, \$12.
- 26 Round table, 4½" in diameter, light finish \$20.
- 27 "Picking Flowers", artist unknown c1845. Girl in red dress, sunset over lake in background, lovely colors, tiny flowers and bird. 3 x 2 1/8", \$12.
- 28 Heart shaped cheese mold on legs. 3/8" long. shiny finish, \$3.
- 29 Funnel with handle, ½" long, shiny finish, \$2.
- 30 Curved spout coffee pot with hinged lid. Polished, \$13. Country painting on black pot, \$15.

- 31 "Pie Plate" candlestick with attached snuffer, antiques, \$7.50
- 32 Black braced back Windsor chair with stained seat 3½" high, \$20.
- 33 Gate leg table. Beautiful vase-and-ball turnings, handy drawer. Choice of cherry, walnut or maple. Closed - 3 5/8 x 1 1/4". Opens to 4 3/8" x 2 5/8" high, \$60.
- 34 Deed box for important papers. Hinged top with brass handle. Pattern is a copy of original. Small, detailed and beautiful, 3/4" wide, \$15.
- 35 Ipswich Betty Lamp with stand and chain with hook and pick for hanging. Antique finish, 1" high, with chain 2", \$10.50
- 36 Ipswich Betty Lamp with chain for hanging as described above. Antique finish, \$5.25
- 37 Cookie cutters, many designs; star, animals, gingerbread woman, etc. Antique finish, 3 in a package; 1 tiny, 1 very tiny, 1 tiny tiny, \$3.75
- 38 Candle mold, antique finish, 1" high, \$9.
- 39 Doughnut cutter, antique finish, \$1.25
- 40 "Man Feeding Bear an Ear of Corn", artist unknow c1870. The moon and stars shine in a blue sky, that's a dog on the rooftop! 1½ x 2 1/8", \$6.
- 41 Landis Lantern. A large, hanging lantern with antique finish. 1 3/4" high with hook and chain. \$15.
- 42 Tin kitchen. A skewer turns and is removable after pulling up left side rod. Door opens so cook can check roast. Antiques, 2" wide, \$15.
- 43 "Tree of Life", Hannah Cohoon 1854. Shaker "spirit" painting in orange and green, 1 3/4 x 2, \$6
- 44 "Tea" caddy. Delicate fruit pattern on black. 7/8" tall, \$6.
- 45 Sugar bowl and lid. Tiny, exquisite piece, white band on black, \$5.
- 46 Creamer, colorful design on black background. 3/8" high, \$3.50
- 47 Coffee pot, decorated on both sides, black background. Top is removable, 1" high, \$9.



Norwell, Massachusetts 02061

SHIP TO:

NAME: \_\_\_\_\_

STREET: \_\_\_\_\_

CITY \_\_\_\_\_ STATE \_\_\_\_\_ ZIP \_\_\_\_\_

CAT. NO.	ITEM	COLOR	PRICE	QUANTITY	TOTAL

PLEASE ALLOW 6-8 WEEKS FOR DELIVERY, MANY PIECES ARE CUSTOM MADE. IF YOU ARE NOT COMPLETELY SATISFIED RETURN WITHIN 10 DAYS, WRAP WELL AND INSURE.

ITEMS ARE SHIPPED UPS.

PRICES SUBJECT TO CHANGE WITHOUT NOTICE. THIS PRICE LIST SUPERCEDES PREVIOUS PRICE LIST.

MAKE CHECKS PAYABLE TO: MILLIE BIRKEMEIER

TOTAL OF ORDER	\$
MASSACHUSETTS RESIDENTS ADD 3% SALES TAX	\$
SHIPPING AND HANDLING	\$ 1.00
TOTAL AMOUNT ENCLOSED	\$